



NUSANTARA

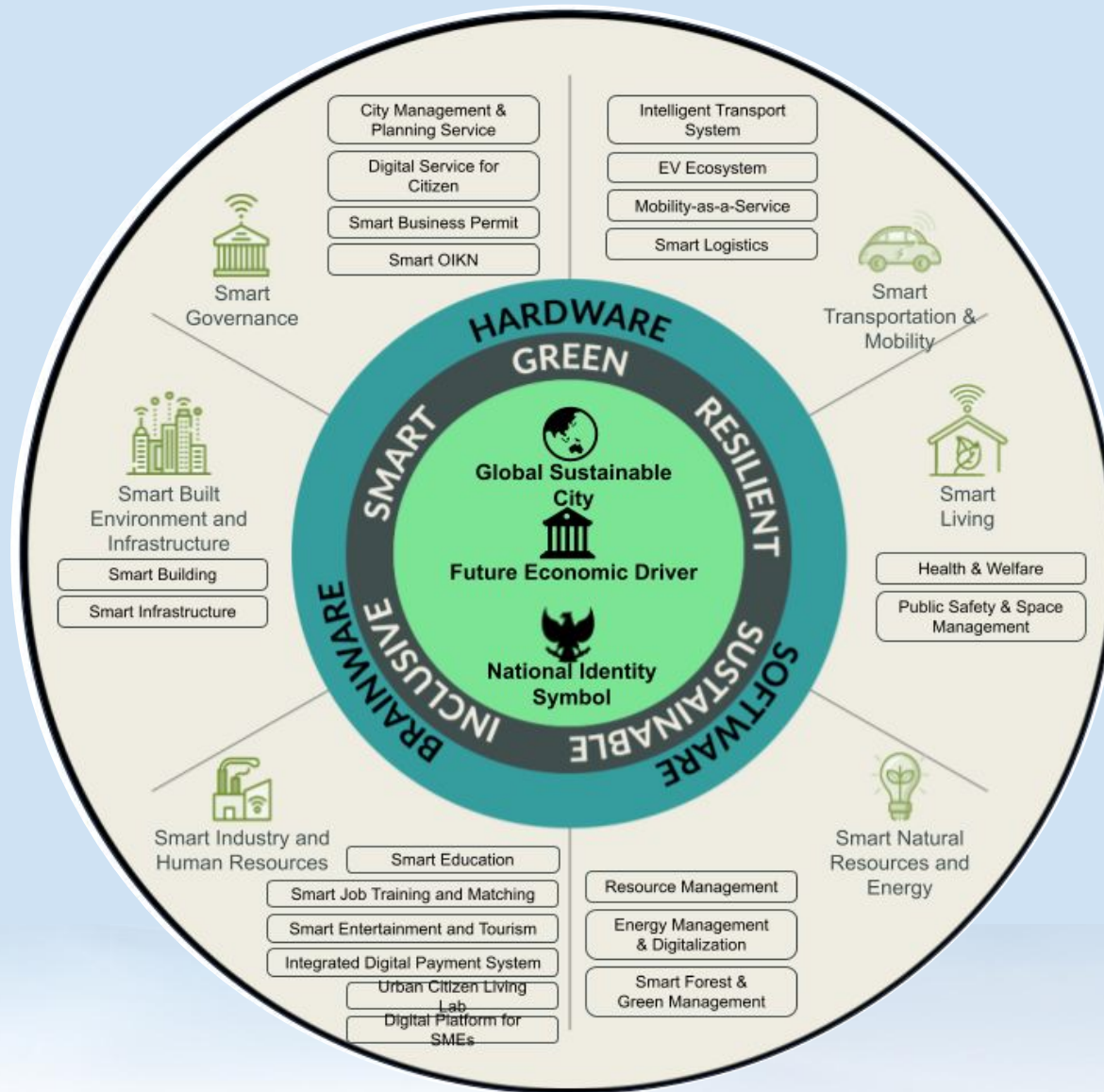
Nusantara Command Center Tech Landscape 2024

Deputy for Green and Digital
Transformation, Nusantara Capital City
Authority

**Smart City Investment Package
Nusantara Capital City Authority**

Market Briefing, March 2024





1 Governance

- Digital Identification
- Data Exchange Layer
- Application's Layer

Smart Administration	Smart Permit
Digital Identities	

2 Transportation & Mobility

- Intelligent Transport System
- MaaS
- EV Ecosystems
- Smart Logistics

Urban Air Mobility	EV Charging
Autonomous Driving System	IoT in Logistics

3 Living

- Air Monitoring
- Health & Welfare
- Public Safety & Space Management

Telemedicine	Early Warning System
Threat Detection	Smart Public Spaces

4 Natural Resources & Energy

- Energy Management & Digitalization
- Resource Management
- Smart Forest & Green Management

Smart Grid	Smart Waste Management
Biodiversity Monitoring	

5 Industry & Human Resources

- Smart Education
- Smart Job Training and Matching
- Smart Tourism
- Metaverse Digital Social Platform
- Digital Payment System
- Technology Demonstration Center
- Urban Citizen Living Lab
- Digital Platform for SMEs

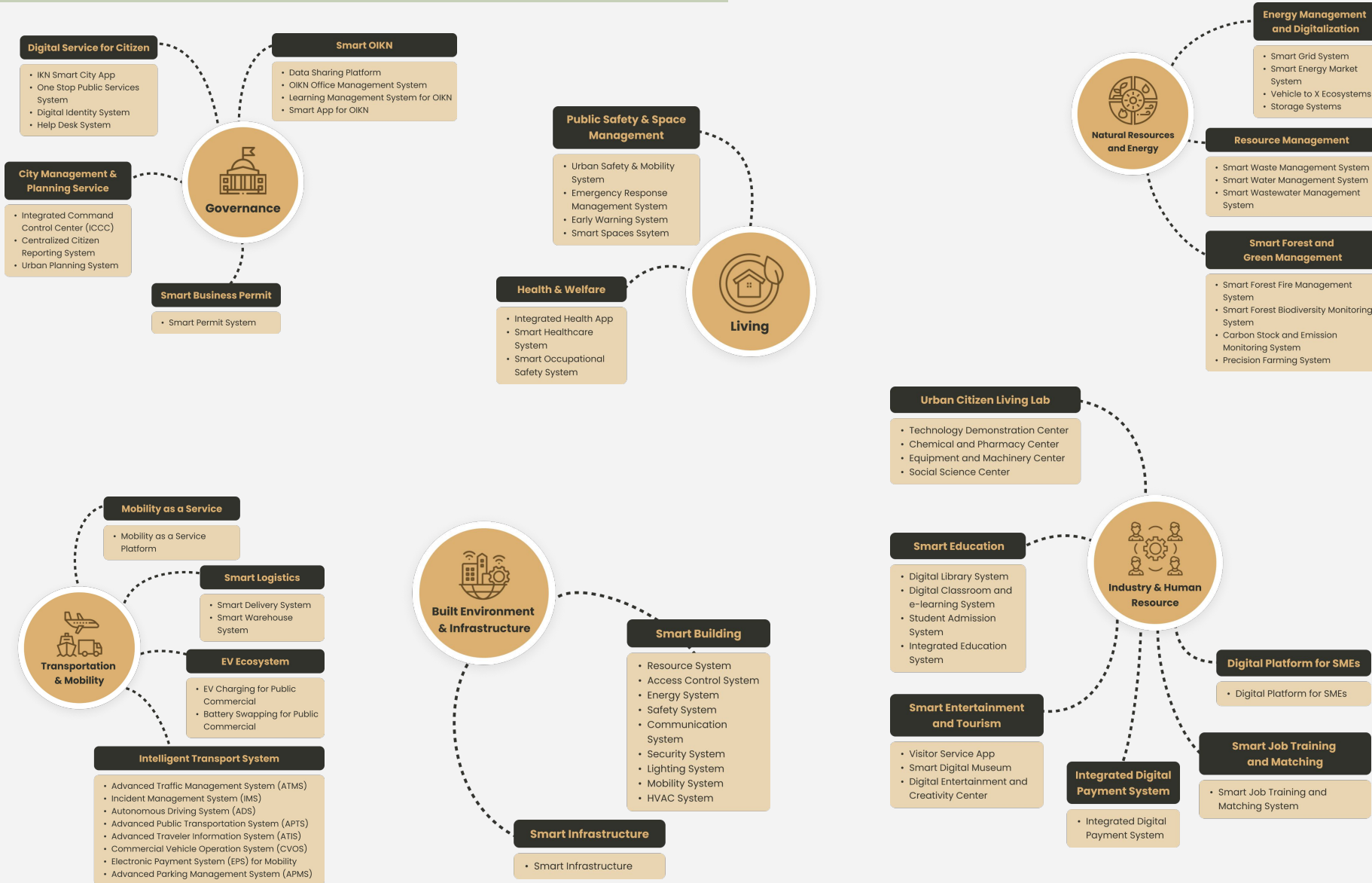
Digital Librarie	Digital Museum	Smart Industrie
------------------	----------------	-----------------

6 Built Environment & Infrastructure

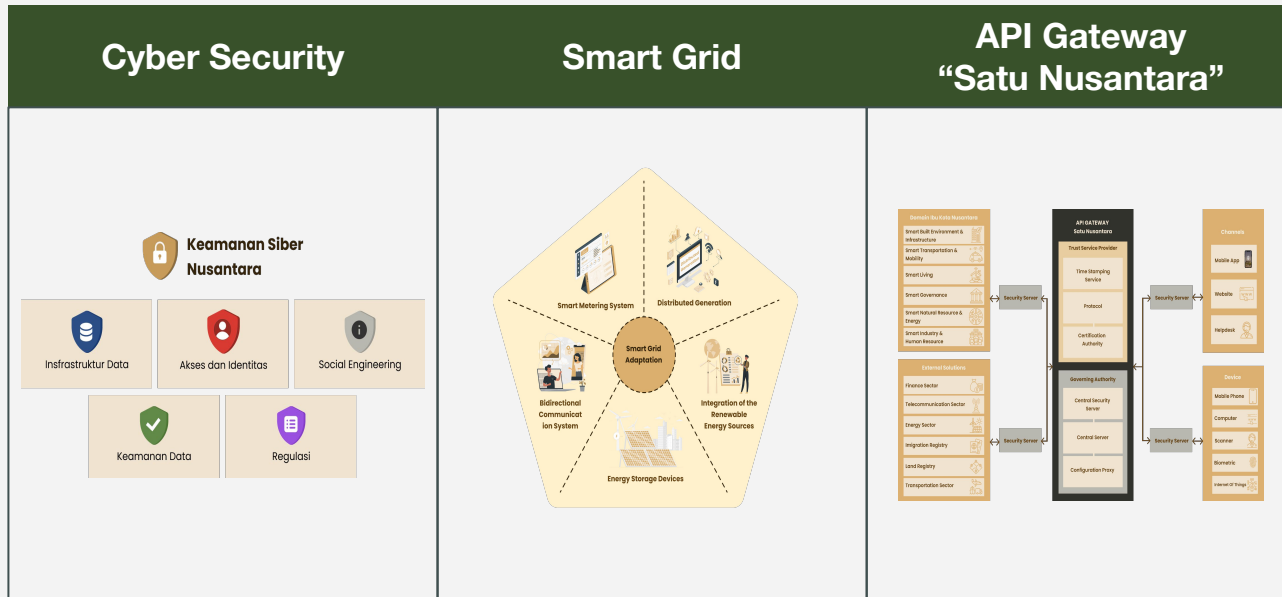
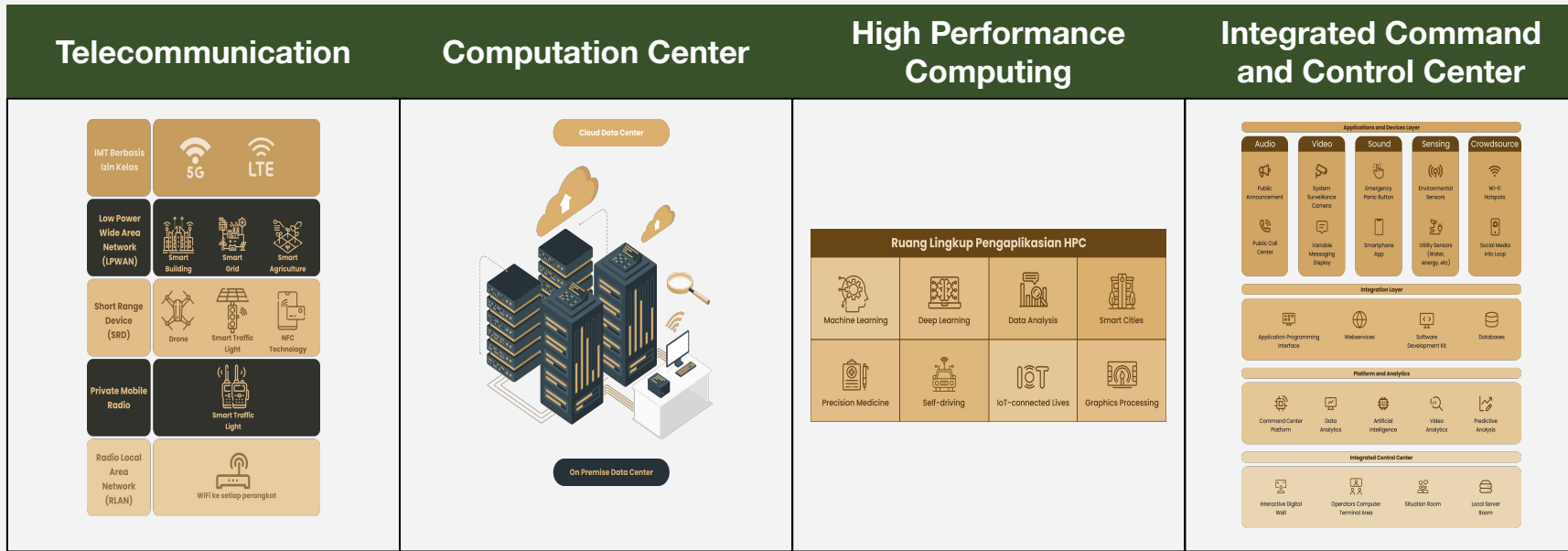
- Facility Management System
- Building Management System
- Propagation of Internet Acces
- Smart Infrastructure System

Digital Twin	Smart Building	Smart Pole
Building / Infrastructure Automation System		

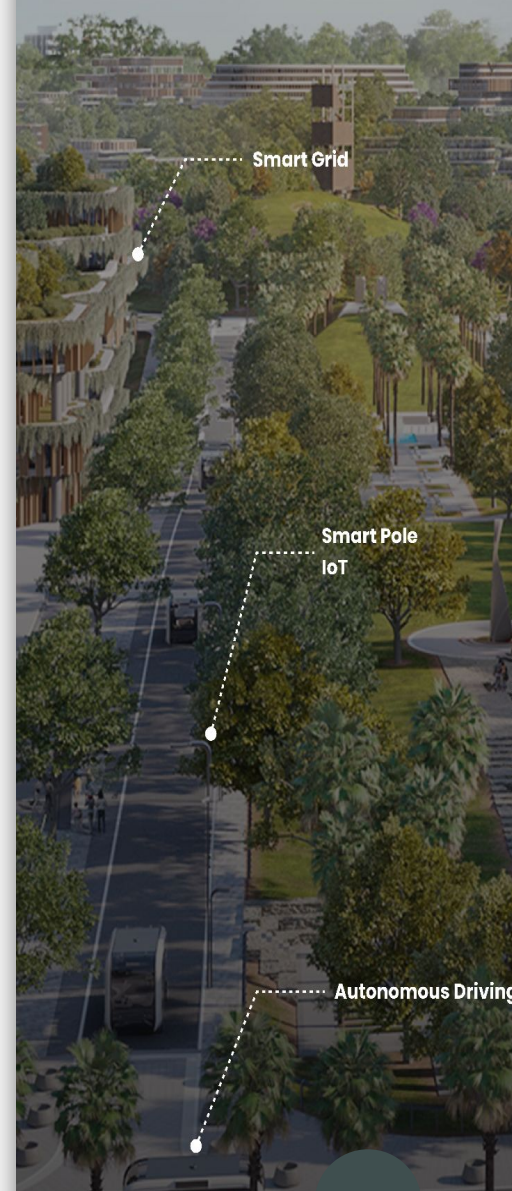
67 Smart Features Smart City Nusantara



Nusantara Smart City Technology



Teknologi Pendukung Kota Cerdas Nusantara



Internet of Things	Autonomous Driving	Unmanned Aerial Vehicle (UAV)	Interactive Display	Smart Pole	Artificial Intelligence
	<p>Otomatisasi Beryarat Kendaraan dapat melakukan deteksi keadaan lingkungan, kendaraan melakukan manuver dengan tepat, tugas mengemudi masih sepenuhnya diserahkan kepada manusia.</p> <p>Otomatisasi Tinggi Kendaraan melakukan semua tugas mengemudi dalam keadaan tertentu. Kemampuan operasi dan pengambilan keputusan masih menjadi pilihan manusia.</p> <p>Otomatisasi Penuh Kendaraan melakukan semua tugas mengemudi secara keseluruhan tanpa intervensi manusia. Tidak diperlukan perhatian atau intervensi manusia.</p> <p>Ekosistem Mengemudi dengan Supervisi Sistem Otomatisasi Kendaraan</p>	<p>Wahana Udara Terbang</p> <p>Kendaraan</p> <p>Wahana Udara Perantara</p> <p>Wahana Udara Rendah</p> <p>Butir Zone</p> <p>Wahana Udara Tinggi</p>	<p>Smart Governance</p> <p>Technology Demonstration</p> <p>Aplikasi Interaktif Display</p> <p>Smart Digital Museum</p> <p>Smart Spaces</p>	<p>Jaringan Nirkabel</p> <p>Sensor</p> <p>Video Monitoring</p> <p>RFID</p> <p>Penerangan Cerdas</p> <p>Display Informasi</p> <p>Emergency Button</p> <p>Charging Pile</p>	<p>Artificial Intelligence</p> <p>Machine Learning</p> <p>Deep Learning</p>

Digital Twin	Computer Vision	Geo-Analytics	Teknologi Biometrik	Blockchain	NLP, Pengenalan Suara dan Asisten Suara
<p>Physical Twin</p> <p>Digital Twin</p>	<p>COMPUTER VISION</p> <p>Klasifikasi/Komputer</p> <p>Pemeliharaan dan Pemrosesan Gambar</p> <p>Pengenalan Wajah</p> <p>Pengenalan gerakan dan isyarat</p> <p>Mobil Tanpa Pengemudi</p> <p>Augmented Reality</p> <p>Robotika</p>	<p>Orde 1</p> <p>Orde 2</p> <p>Orde 3</p> <p>Orde 4</p> <p>Orde 5</p> <p>Orde 6</p> <p>Orde 7</p> <p>Orde 8</p> <p>Orde 9</p> <p>Orde 10</p>	<p>Pengenalan Wajah</p> <p>Pengenalan Iris Mata</p> <p>Pengenalan Sidik Jari</p> <p>Pengenalan Suara</p> <p>Pengenalan Pola Pengetikan</p>	<p>Smart Farming</p> <p>Smart Factories</p> <p>Smartway 1</p> <p>Smartway 2</p> <p>Smartway 3</p> <p>Smartway 4</p> <p>Smartway 5</p> <p>Smartway 6</p> <p>Smartway 7</p> <p>Smartway 8</p> <p>Smartway 9</p> <p>Smartway 10</p> <p>Smartway 11</p> <p>Smartway 12</p> <p>Smartway 13</p> <p>Smartway 14</p> <p>Smartway 15</p> <p>Smartway 16</p> <p>Smartway 17</p> <p>Smartway 18</p> <p>Smartway 19</p> <p>Smartway 20</p> <p>Smartway 21</p> <p>Smartway 22</p> <p>Smartway 23</p> <p>Smartway 24</p> <p>Smartway 25</p> <p>Smartway 26</p> <p>Smartway 27</p> <p>Smartway 28</p> <p>Smartway 29</p> <p>Smartway 30</p> <p>Smartway 31</p> <p>Smartway 32</p> <p>Smartway 33</p> <p>Smartway 34</p> <p>Smartway 35</p> <p>Smartway 36</p> <p>Smartway 37</p> <p>Smartway 38</p> <p>Smartway 39</p> <p>Smartway 40</p> <p>Smartway 41</p> <p>Smartway 42</p> <p>Smartway 43</p> <p>Smartway 44</p> <p>Smartway 45</p> <p>Smartway 46</p> <p>Smartway 47</p> <p>Smartway 48</p> <p>Smartway 49</p> <p>Smartway 50</p> <p>Smartway 51</p> <p>Smartway 52</p> <p>Smartway 53</p> <p>Smartway 54</p> <p>Smartway 55</p> <p>Smartway 56</p> <p>Smartway 57</p> <p>Smartway 58</p> <p>Smartway 59</p> <p>Smartway 60</p> <p>Smartway 61</p> <p>Smartway 62</p> <p>Smartway 63</p> <p>Smartway 64</p> <p>Smartway 65</p> <p>Smartway 66</p> <p>Smartway 67</p> <p>Smartway 68</p> <p>Smartway 69</p> <p>Smartway 70</p> <p>Smartway 71</p> <p>Smartway 72</p> <p>Smartway 73</p> <p>Smartway 74</p> <p>Smartway 75</p> <p>Smartway 76</p> <p>Smartway 77</p> <p>Smartway 78</p> <p>Smartway 79</p> <p>Smartway 80</p> <p>Smartway 81</p> <p>Smartway 82</p> <p>Smartway 83</p> <p>Smartway 84</p> <p>Smartway 85</p> <p>Smartway 86</p> <p>Smartway 87</p> <p>Smartway 88</p> <p>Smartway 89</p> <p>Smartway 90</p> <p>Smartway 91</p> <p>Smartway 92</p> <p>Smartway 93</p> <p>Smartway 94</p> <p>Smartway 95</p> <p>Smartway 96</p> <p>Smartway 97</p> <p>Smartway 98</p> <p>Smartway 99</p> <p>Smartway 100</p>	<p>Bidang Pengembangan NLP</p> <p>Masih Diperlukan</p> <p>NLP Kritis</p> <p>Sistem Berbasis Suara</p> <p>Analisa Sentimen</p> <p>NLP untuk IoT</p> <p>Asisten dan Agen Virtual</p> <p>Pembangunan dan Pengembangan Suara</p> <p>Kendali Suara untuk Aplikasi</p>

Robotic Process Automation	Extended Reality	Vehicle to X	Bioteknologi
<p>Productivity and Efficiency</p> <p>Accuracy and Quality</p> <p>Advance Analytics and Security</p> <p>Scalability and Flexibility</p> <p>Cost Savings</p>	<p>AR Augmented Reality</p> <p>MR Mixed Reality</p> <p>VR Virtual Reality</p> <p>Realitas (Integrasi Cahaya) Immersif</p> <p>Interaksi dengan Objek Nyata dan Virtual</p> <p>Pembelajaran dalam Lingkungan Digital Interaktifnya</p>	<p>Vehicle to X</p> <p>Diriway ecosystem</p> <p>V2V Vehicle-to-Vehicle</p> <p>V2I Vehicle-to-Infrastructure</p> <p>V2X Vehicle-to-Everything</p> <p>V2P Vehicle-to-Pedestrian</p> <p>V2N Vehicle-to-Network</p>	<p>Keuntungan Pemanfaatan Bioteknologi</p> <p>Diagnosis Lebih Awal</p> <p>Diagnosis yang Lebih Tepat</p> <p>Reaksi / Tindak Sampung lebih cepat</p> <p>Pendekatan Prognosis/Perawatan</p> <p>Kelengkapan untuk uji klinis</p> <p>Pengembangan yang lebih cepat</p>

Investment Package 2024 - 2030

1 ICCC



2 CCTV



3 INTEGRATED PAYMENT SYSTEM



21 DATA CENTER



PHARMACY CENTER



SEMICONDUCTOR CENTER



SMART BUILDING



20 SMART POLE



SMART PARKING



22 UAV



AUTONOMOUS VEHICLE



4 EV CHARGING



13 SMART LIVING



14 SMART CULTURE



15 TECHNO HOUSE



6 SMART LOCKER



8 SMART DISPLAY



7 SMART HEALTH



5 SMART ENERGY



24 SMART GRID



9 SMART WASTE



10 SMART WATER



11 SMART FOREST



12 SMART ENVIRONMENT



INVESTMENT CATEGORY

ACCESS & DATA HUB

LIVING & WELL-BEING

BUILDING & INDUSTRY

ENERGY & ENVIRONMENT

TRANSPORTATION



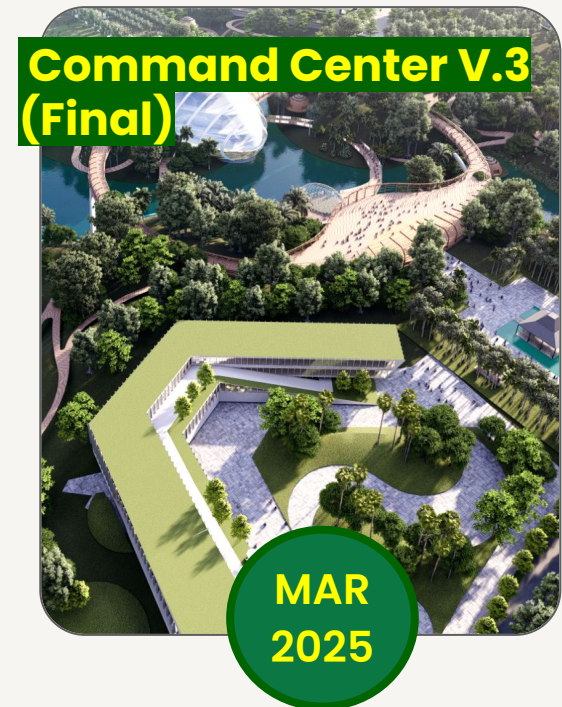
Nusantara Command Center(NCC) Development Plan



**Construction Worker
Housing (HPK)**



**Coordinating Ministry
Office (Kemenko)**



**OIKN Main
Headquarter**

Definition and Scope of Command Center

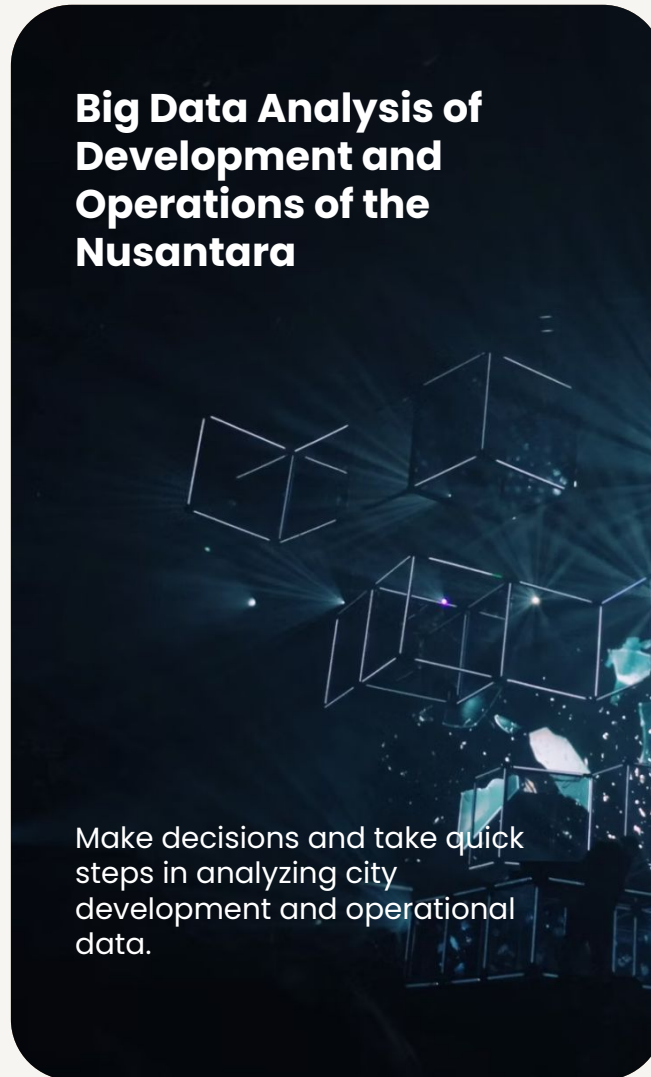
The Nusantara Command Center is a monitoring and control service for the Indonesian smart city based on big data and computer vision technology utilizing CCTV-based monitoring and monitoring technology, as well as optimizing digital services for IKN citizens

Supervision and Monitoring of the Development of Nusantara



Monitoring the location and development of the Indonesian Capital City via CCTV to provide appropriate responses.

Big Data Analysis of Development and Operations of the Nusantara



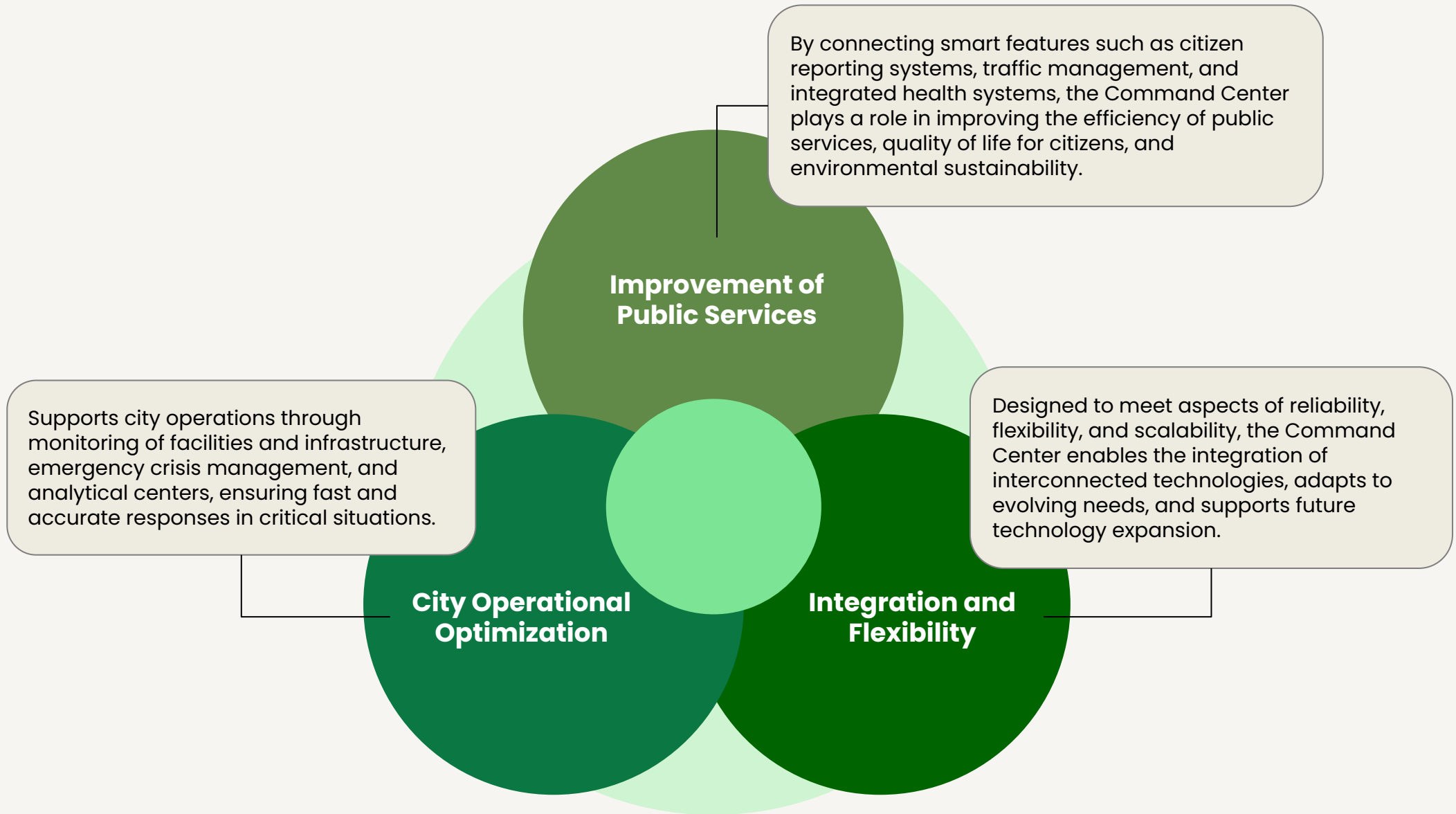
Make decisions and take quick steps in analyzing city development and operational data.

Monitoring Development and Operational Participation Data

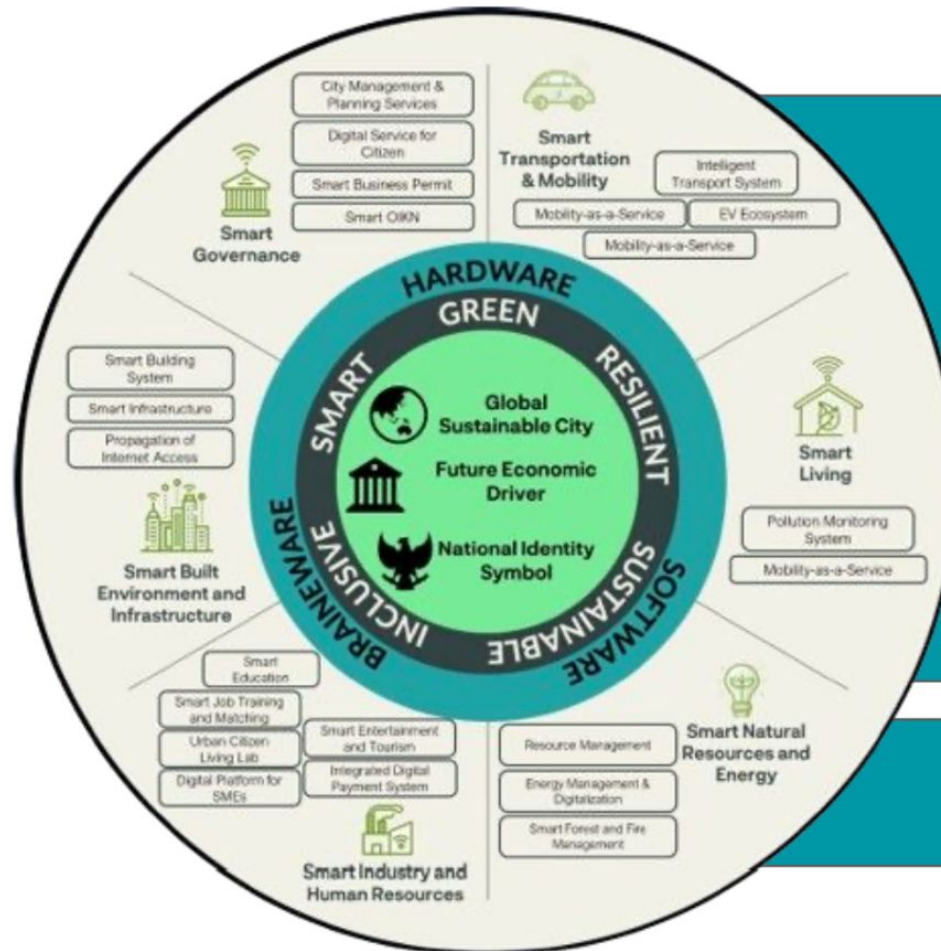


Monitoring data related to the development of the Nusantara Capital City Authority, such as investment, development input, and others

Command Center Benefits for IKN



Principles of Command Center Planning



Reliable: Nusantara Command Center that will be built at IKN must be reliable to achieve its mission of supporting city operations, including monitoring facilities and infrastructure, emergency crisis management and an analytical center.

Flexible: The Command Center must be flexible enough to accommodate unexpected conditions that arise during an emergency. Systems and spaces must be able to adapt to new users, unexpected circumstances, and extremely high loads

Scalable: The Command Center must be able to develop and support existing technology

About the Nusantara Command Center

What is Nusantara Command Center?

Nusantara Command Center is an urban service technology system through efficient integration and monitoring.

This system combines a CCTV video system for security and traffic monitoring, coordinates emergency services and public complaints for rapid response in emergency situations, and integrates social and economic services to support the growth and prosperity of the entire IKN community

Emergency and Crisis Management

Integrated digital public contact service for incidents and emergencies (BSSN, BMKG, Basarnas)

Security and Surveillance

Monitoring roads and public places in real time and connecting with relevant authorities (Polri, TNI, etc.)



Monitoring all IKN public facilities

Visibility to the surrounding environment and integration with energy and public services

Analytics Goals Dashboard

Digital Twin for development analysis and potential risks that may occur in the IKN area



Command Center V.1

Version I - Construction Worker Housing (HPK)

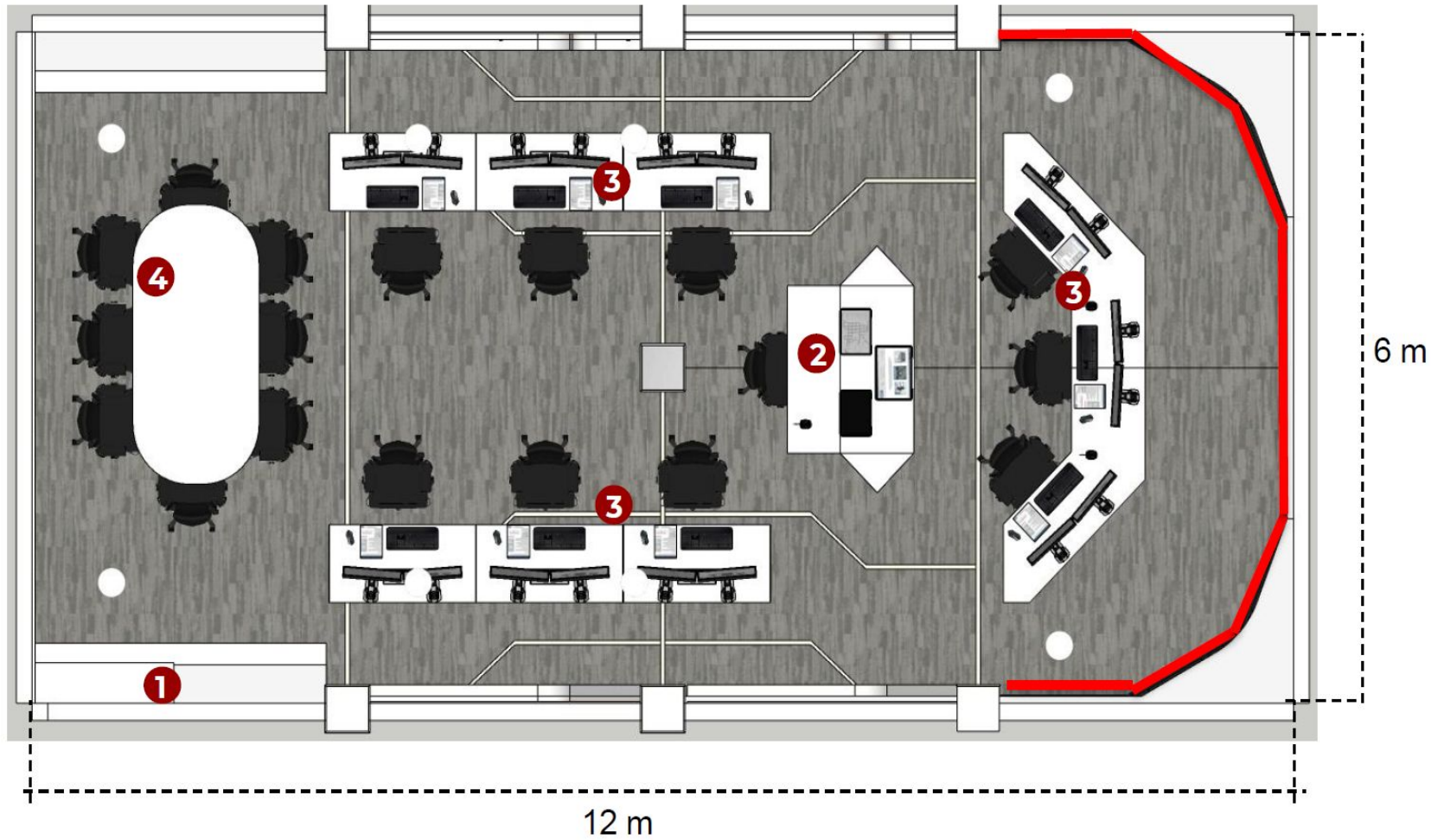
Command Center V.1



FEB 2024

Completion of Command Center V.1

Floor Plan of ICCC



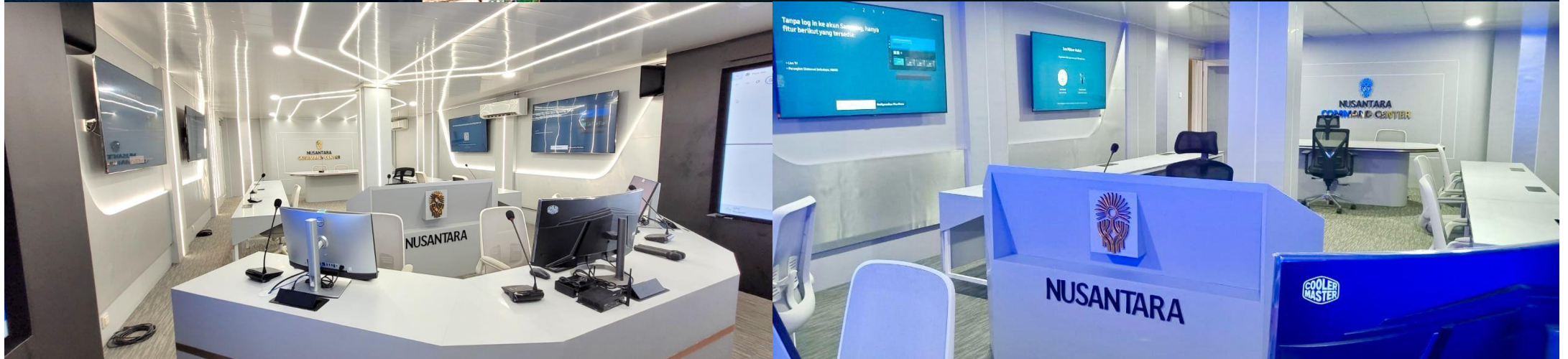
Legend:

- 1. Main Entry
- 2. President Area
- 3. Control Area
- 4. Meeting Area

Remarks:

 : LED TV

Gallery Command Center V.1



Nusantara Command Center Phase 1 Data and Services Integration Center



Grand Design Nusantara Command Center

Data Sources

OIKN

Development Plan Data



Development Status Data



Data CCTV



Spatial Data



Investment Data



Reporting Data / Social Media



Command Center Digital Operation

MONITORING DASHBOARD



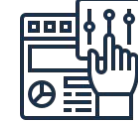
Development Achievements



Monitoring Visual



Data analysis



Control Management

TEAM



ICC Manager



ICC Officer



Reporting Officer

ACTIVITY



24/7 Monitoring



Analysis and Research



Reporting

FACILITIES



- Interactive Flat Display
- Video Wall Seamless
- Video Conference

Services

REAL TIME MONITORING



Desktop Device



Tab Device



Mobile Device

ANALYSIS & REPORTING



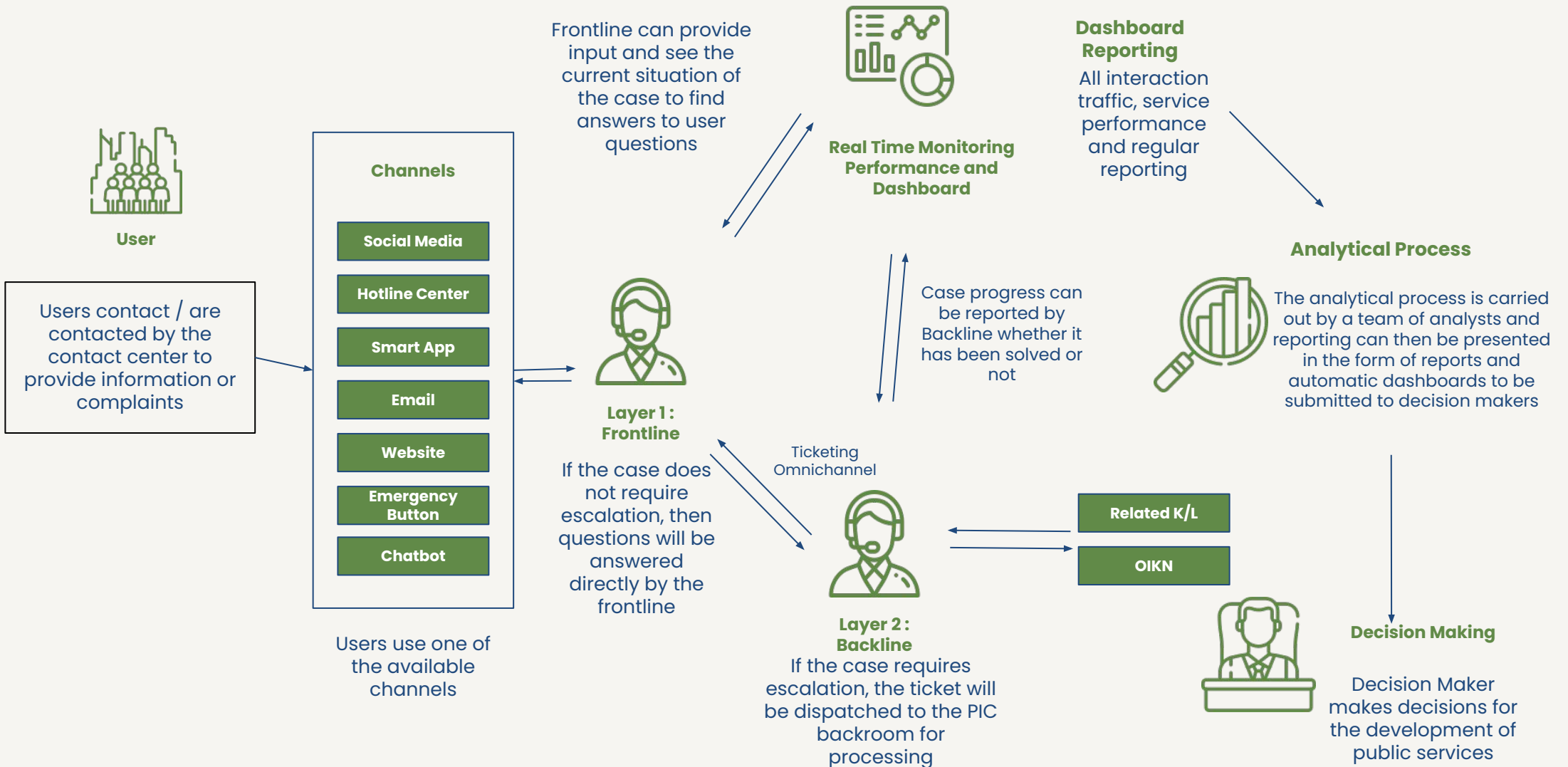
- Traffic Conversation
- Sentiment Analysis
- Engagement Analysis
- Influencer Identification
- Geo Location Based Analysis
- Social Network Analysis, etc.
- Daily, Weekly, Monthly, Annual, ad hoc report, etc.

CRISIS MANAGEMENT ALERT

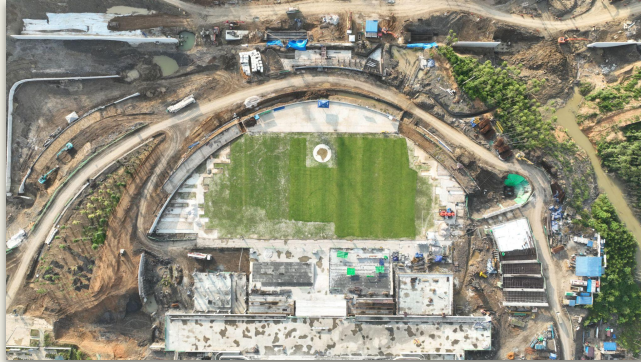


- Immediate alerts when certain conditions are encountered
- Verify alerts and short Summary from Analyst
- Sending warnings in the form of notifications

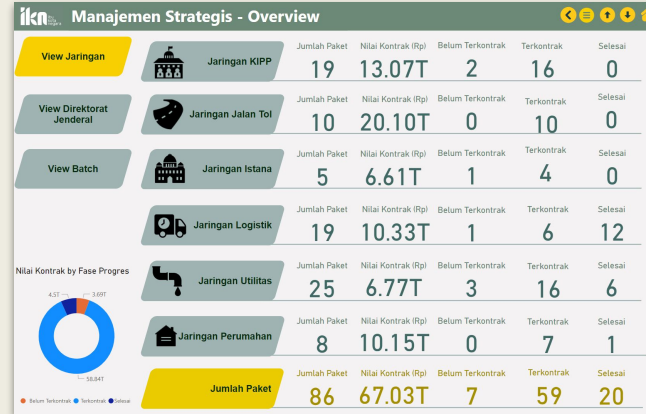
Nusantara Control Center Basic Workflow



Nusantara Control Center Contents List



Live Progress



Project Overview

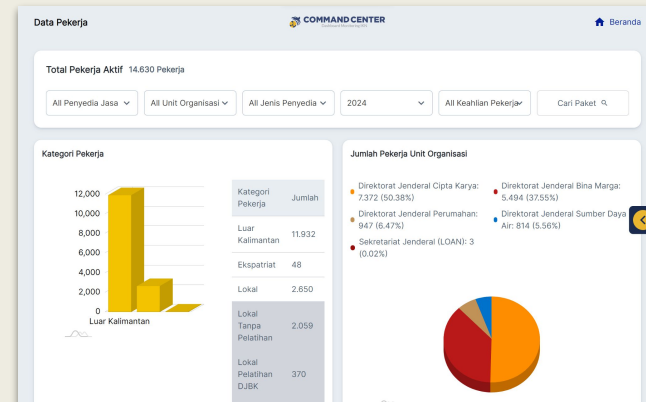


Cost Progression

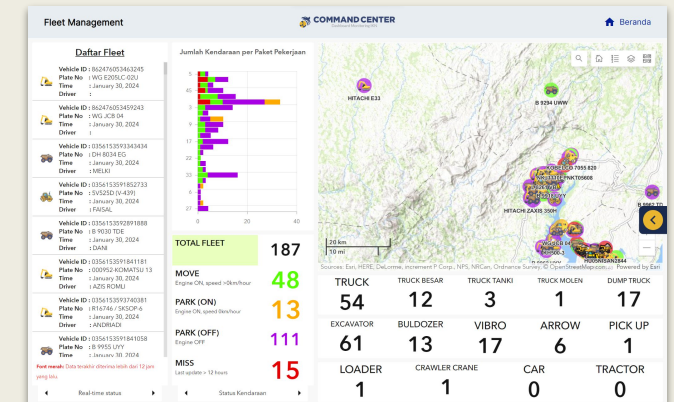
List of Issues

Tipe Risiko	Deskripsi Risiko / Isu	Deskripsi Dampak	Dampak	Langkah Mitigasi	Status	Komentar
Kendala Biaya	Kelebihan anggaran, kekurangan dana	Kualitas terancam, penundaan proyek	High	Perencanaan keuangan komprehensif, audit berkala	Open	
Lingkungan	Bencana alam (gempa bumi, banjir, tsunami)	Kerusakan infrastruktur, risiko keselamatan	High	Rencana kesiapsiagaan bencana yang detil serta desain yang tangguh	Open	
Penundaan Infrastruktur	Pembangunan infrastruktur penting yang tertunda	Fungsionalitas terbatas, mengganggu kelayakan	High	Perencanaan proyek detil serta jadwal kontinjensi	Open	
Politik dan Regulasi	Perubahan kepemimpinan atau peraturan politik	Penundaan, perubahan kebijakan, perselisihan	High	Keterlibatan rutin dengan pembuat kebijakan, perlindungan hukum	Open	
Akuisisi Lahan	Pembebasan lahan yang serentif dan relokasi masyarakat	Demonstrasi, tantangan hukum, publisitas negatif	Medium	Konsultasi dengan masyarakat yang terkena dampak, kompensasi yang adil	Open	
Inflasi (Biaya Bahan)	Peningkatan biaya bahan	Peningkatan biaya namun anggaran kecil	Medium	Pemantauan biaya rutin, sumber alternatif	Open	
Teknologi	Tantangan dalam penerapan	Efisiensi, masalah operasional	Medium	Tenaga kerja, terampil serta dukungan teknis berkelanjutan	Open	
Tenaga Kerja	Kekurangan tenaga kerja serta potensi kebuntuan	Kualitas terancam, penundaan proyek	Medium	Program pelatihan, praktik ketenagakerjaan yang adil	Open	

The Number of Workers



Fleet Management



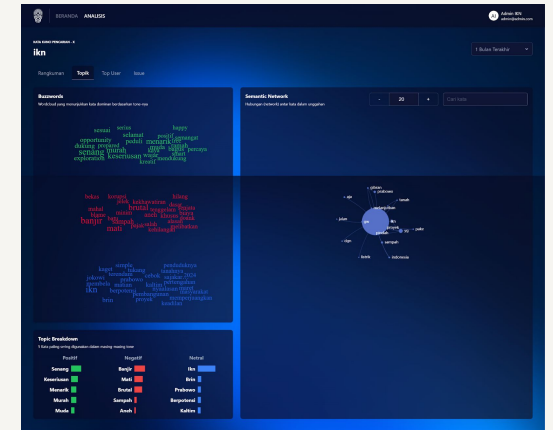
Nusantara Command Center Phase 1

Dashboard Snapshot

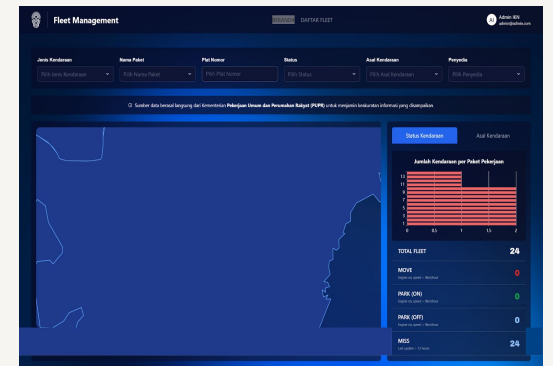
Dashboard Utama



Dashboard Media

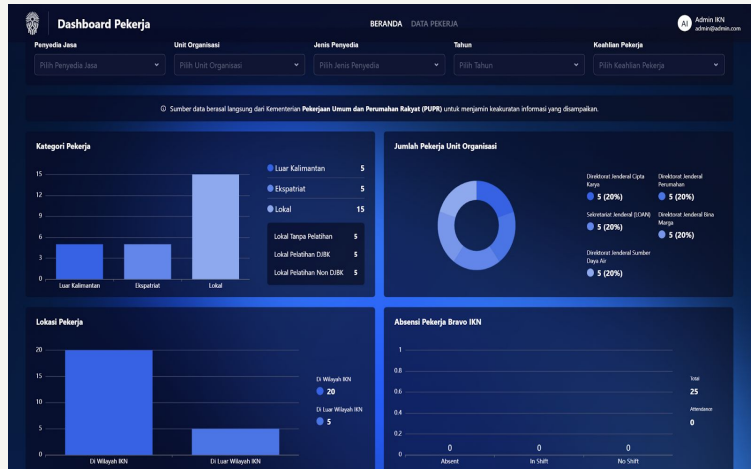


Dashboard Fleet PU



Nusantara Command Center Phase 1 Dashboard Snapshot

Dashboard Pekerja PU



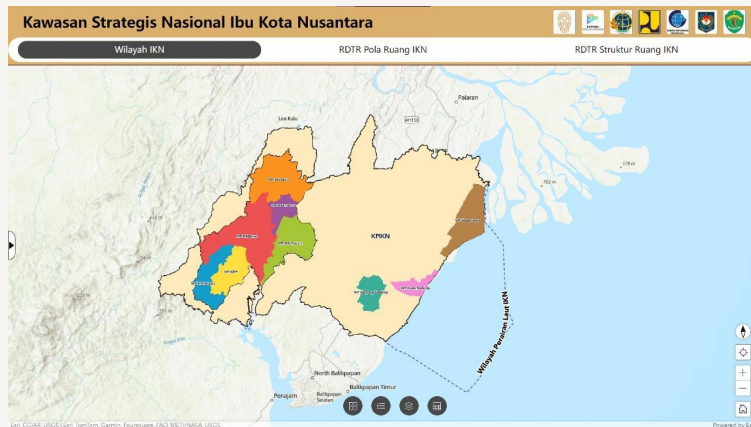
Dashboard Lol Invest



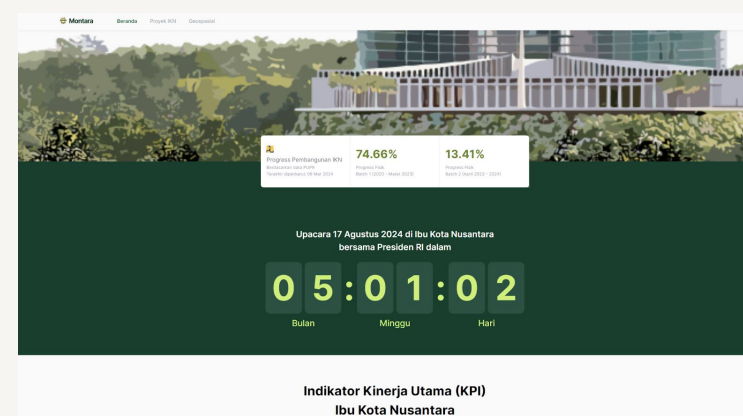
Video Conference

Project Monitoring

Geospatial Platform



Montara



Command Center V.2

Coordinating Ministry Office (Kemenko)

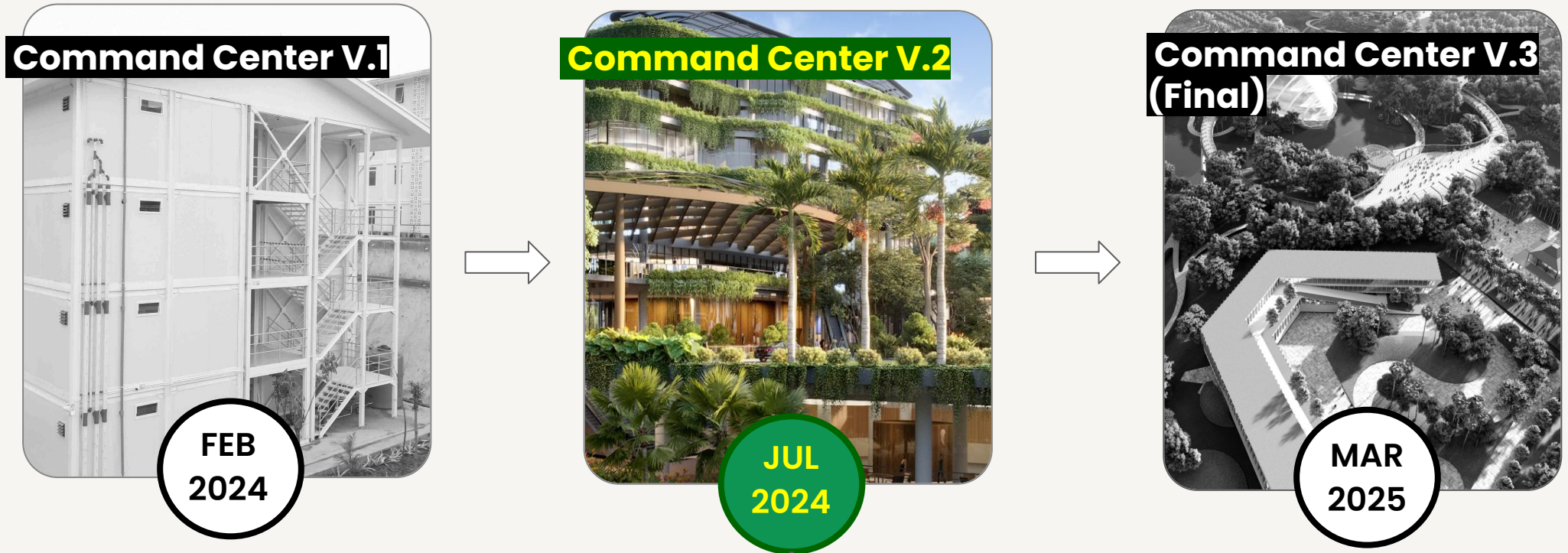
PLAN

Command Center V.2



JUL
2024

Nusantara Command Center(NCC) Development Plan



Objective: To support the flag ceremony activities which will be held on the Republic of Indonesia's Independence Day on 17 August 2024 at WP IKN, a more capable CC is needed as a showcase for more comprehensive and future-proof digital infrastructure development.

Hardware Specs

A. Display & Perangkat Pendukung Command Centre

No	Keterangan	Qty	
1	LCD Video Wall 1.8mm 500nits	27	Unit
2	Bracket Video Wall	27	Unit
3	Chasiss Video Wall Controller	1	Unit
4	Quad Channel HDMI Input Card	3	Unit
5	Quad Channel HDMI Output Card	8	Unit
6	Preview Card	1	Unit
7	Kabel HDMI 10M	6	Unit
8	Kabel HDMI 15m	16	Unit
9	AIO Computer	10	Unit
10	Camera Video Conferences	1	Unit
11	Pengiriman Barang JKT-IKN	1	Ls

B. Pengadaan Perangkat Control AV

No	Keterangan	Qty	
1	AMX Wallmount Touch Panel	1	Unit
2	DVX-2265-4K-TAA 6X2 ALL IN ONE 4K60	1	Unit
3	PR-WP-412	1	Unit
4	JPK-1300	1	Unit

C. Pengadaan Perangkat Speaker & Microphone System

No	Keterangan	Qty	
1	Control Host AM-5000M	1	Unit
2	Microphone Chairman	2	Unit
3	Microphone Delegate AM-5000D	12	Unit
4	Wireless Conference System infrared AM-5000R	1	Unit
5	Charger Pack AM-5000P	1	Unit
6	Battery Base Chairman AM-5000BC	2	Unit
7	Battery Base Delegate AM-5000BD	1	Unit
8	Ceiling Speaker AC-A601	8	Unit
9	Ceiling Subwoofer AC-S601	4	Unit
10	Mixer Amplifier MA600U	1	Unit

D. Power Backup & Pendingin & Elektrikal Command Centre

No	Keterangan	Qty	
1	UPS 20 KVA	1	Unit
2	AC	2	Unit
3	Pipa AC & Kelengkapan Material Instalasi	2	Ls
4	Power / Panel Induk Command Centre	1	Ls

E. Interior

No	Keterangan	Qty	
1	Backdrop Video Wall & Dinding Dengan Perendam Suara	200	M2

F. Instalasi Perangkat Command Centre

No	Keterangan	Qty	
1	Instalasi Video Wall & Konfigurasi & Setting	27	Unit
2	Instalasi Audio System & Konfigurasi	1	Ls
3	Instalasi AC 5PK	2	Unit
4	Instalasi & Konfigurasi UPS 20KVA	1	Unit
5	Programming & Setting Control System AV	1	Ls

Notes: Requirements above are indicative and prospective investors/consortiums may propose recommendations that's considered more strategic on their Feasibility Study for PoC

Command Center V.3 (Final)

PLAN

Located at OIKN's Main Headquarter

Command Center V.3



MAR
2025

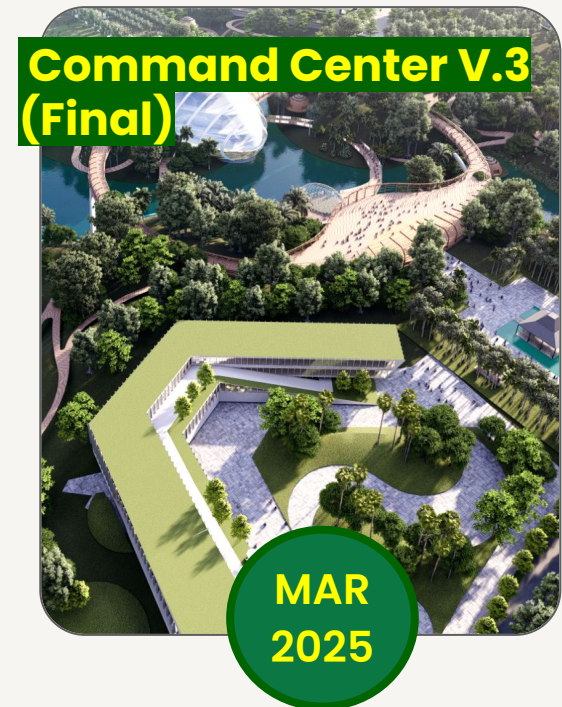
Nusantara Command Center(NCC) Development Plan



**Construction Worker
Housing (HPK)**

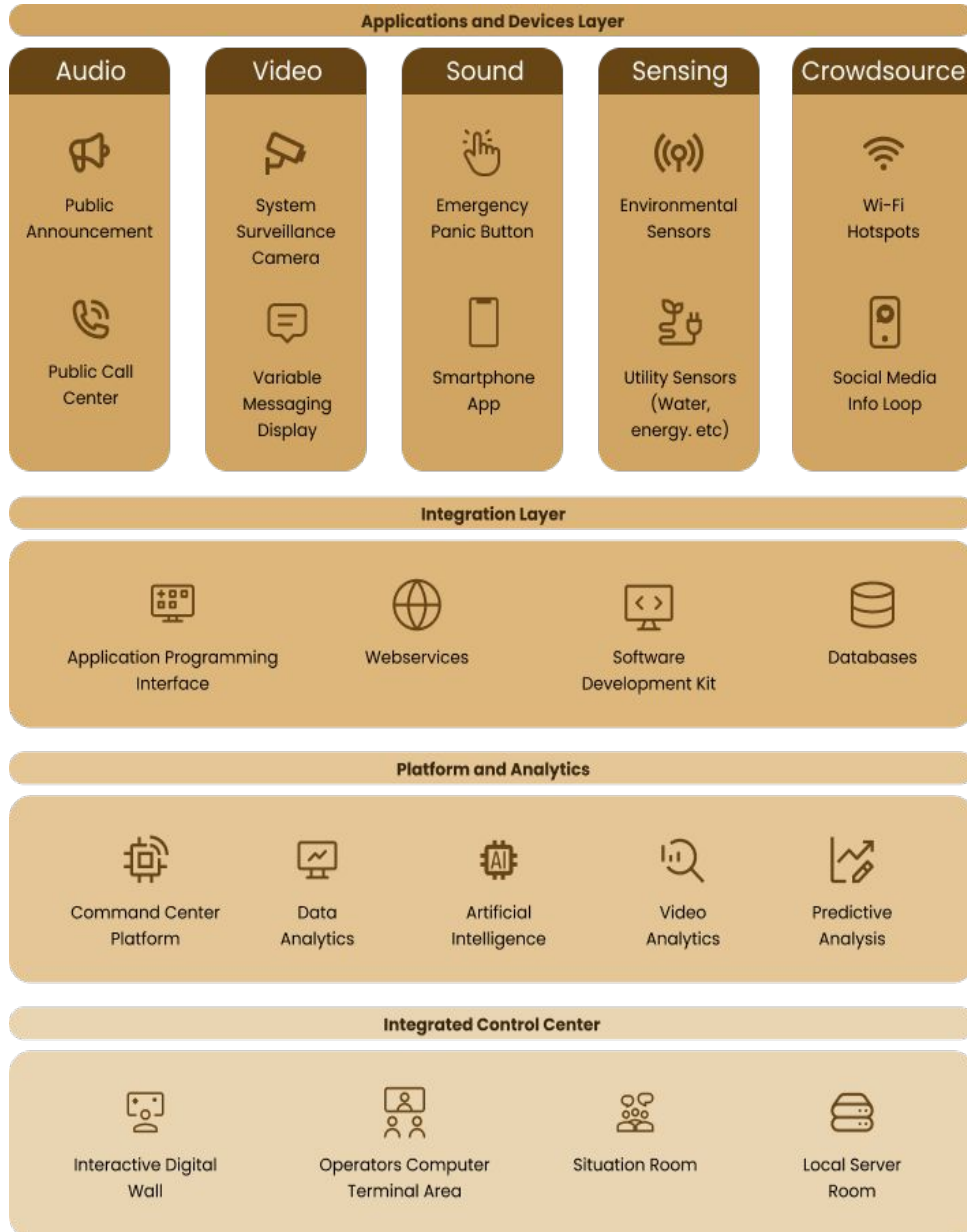


**Coordinating Ministry
Office (Kemenko)**



**OIKN Main
Headquarter**

Technology Architecture



Proof of Concept Requirements

PoC System Minimum Functional Requirements

FEATURES	Integrated Command Control Center (ICCC)	
FUNCTIONAL REQUIREMENT	<ul style="list-style-type: none"> • Emergency and Crisis Management <ul style="list-style-type: none"> ○ ICCC administrators will receive alerts from IKN citizen’s ‘emergency button’ and respond accordingly ○ ICCC administrators will act as one stop digital public contact service for incidents and emergencies, and take necessary actions with respective relevant parties in dispatch response ○ ICCC administrators will receive public safety and natural disaster warnings from relevant parties and relay these information to IKN citizens • Safety and Surveillance <ul style="list-style-type: none"> ○ ICCC administrators can monitor roads and public places in real time ○ ICCC administrators will be connected with relevant parties for safety & security (e.g., POLRI, TNI, firefighter) as part of communication chain for emergency and crisis management 	<ul style="list-style-type: none"> • Ability to monitor of all IKN public facilities, services, and infrastructure <ul style="list-style-type: none"> ○ ICCC administrators can monitor the mobility of citizens and ensure smooth traffic/commute, integrated with Intelligent Transport System command center ○ ICCC administrators can monitor congestion or crowd levels, and share alert to citizens through IKN Smart City App, integrated with Intelligent Transport System command center ○ ICCC administrators have visibility on surrounding environmental (pollution levels, weather, humidity, temperature, etc.) and biodiversity conditions ○ ICCC administrators can monitor public utilities (e.g., water, gas, solid waster, sewerage & drainage, roads, streetlights) conditions, integrated with energy and water command centers • Analytic Purposes <ul style="list-style-type: none"> ○ ICCC administrators can use digital twin for analytics on development and potential risk that can happen to related building/roads ○ ICCC administrators have information on hospitals, disease control and prevention, integrated with help desk ○ ICCC administrators can monitor staple food supply prices and inflation to be used for food security planning <p style="text-align: right; font-size: small;">References: Synergy, Portugal</p>

Notes: Requirements above are indicative and prospective investors/consortiums may propose recommendations that’s considered more strategic on their Feasibility Study for PoC

Room Details and Area Requirement

#	Room Name	Total Room	Remarks	Metrics	Area (m2)	Total area (m2)
1	Main Command Center + Operation Room	1	1	room	500.00	500.00
2	Control Center Room	1	1	room	40.00	40.00
3	Discussion Room	3	1	room	40.00	120.00
4	UPS and Electric Room	1	1	room	120.00	120.00
5	Crisis Center / War Room	1	1	room	90.00	90.00
	Total staff			Effective Area	Sub-Total	870.00
				% Circulation + SP/ME	25%	217.50
				Total GFA		1087.50

Requirement (1/2)

Ruang War Room

No.	Keterangan	Vol	Satuan
1	Profesional Monitor	1	unit
2	3D LED Hologram Table	1	unit
3	Conference Host	1	unit
4	Network Chairman Unit	2	unit
5	Network Delegate Unit	18	unit
6	8" Full Range Speaker	2	unit
7	Power Amplifier	1	unit
8	8-channel Audio Mixer	1	unit
9	FHD AV KVM Over IP NPL Series	2	unit
10	Intelligent Recording Server	1	unit
11	7" Touch Control Processor	1	unit
12	HDMI Splitter 1in 2out	1	unit
13	HDMI Capture Card	1	unit
14	Intelligent Conference Camera	1	unit
15	Network Switch	1	unit
16	USB Soundcard	1	unit

Ruang Rapat Pimpinan

No.	Keterangan	Vol	Satuan
1	136" All in One LED	1	unit
2	Conference Host	1	unit
3	Network Chairman Unit	2	unit
4	Network Delegate Unit	18	unit
5	Intelligent Conference Camera	1	unit
6	8" Full Range Speaker	2	unit
7	Power Amplifier	1	unit
8	8-channel Audio Mixer	1	unit
9	FHD AV KVM Over IP NPL Series	1	unit
10	Intelligent Recording Server	1	unit
11	7" Touch Control Processor	1	unit
12	HDMI Splitter 1in 2out	1	unit
13	HDMI Capture Card	1	unit
15	Network Switch	1	unit
16	USB Soundcard	1	unit

Ruang Diskusi 1 Selatan

No.	Keterangan	Vol	Satuan
1	86" Interactive Flat Panel	1	unit
2	Open Plugable Slot	1	unit
3	FHD AV KVM Over IP NPL Series	1	unit
4	HDMI Splitter 1in 2out	1	unit
5	HDMI Capture Card	1	unit
6	Network Switch	1	unit

Ruang Diskusi 2 Selatan

No.	Keterangan	Vol	Satuan
1	86" Interactive Flat Panel	1	unit
2	Open Plugable Slot	1	unit
3	FHD AV KVM Over IP NPL Series	1	unit
4	HDMI Splitter 1in 2out	1	unit
5	HDMI Capture Card	1	unit
6	Network Switch	1	unit

Ruang Diskusi 1 Utara

No.	Keterangan	Vol	Satuan
1	65" Interactive Flat Panel	1	unit
2	Open Plugable Slot	1	unit
3	FHD AV KVM Over IP NPL Series	1	unit
4	HDMI Splitter 1in 2out	1	unit
5	HDMI Capture Card	1	unit
6	Network Switch	1	unit

Ruang Diskusi 2 Utara

No.	Keterangan	Vol	Satuan
1	65" Interactive Flat Panel	1	unit
2	Open Plugable Slot	1	unit
3	FHD AV KVM Over IP NPL Series	1	unit
4	HDMI Splitter 1in 2out	1	unit
5	HDMI Capture Card	1	unit
6	Network Switch	1	unit

Requirement (2/2)

Ruang Media

No.	Keterangan	Vol	Satuan
1	65" Interactive Flat Panel	1	unit
2	Open Plugable Slot	1	unit
3	FHD AV KVM Over IP NPL Series	1	unit
4	HDMI Splitter 1in 2out	1	unit
5	HDMI Capture Card	1	unit
6	Network Switch	1	unit

Ruang Command Center

No.	Keterangan	Vol	Satuan
1	Backlight LED Video Wall 55"	48	unit
2	Backlight LED Video Wall 55"	4	unit
3	Front Access Bracket	48	unit
4	FHD AV KVM Over IP NPL Series	48	unit
5	FHD AV KVM Over IP NPL Series (<i>back-up unit</i>)	4	unit
6	4K AV KVM Over IP NPL Series	95	unit
7	4K AV KVM Over IP NPL Series (<i>back-up unit</i>)	8	unit
8	Core PC with Quad 4K HDMI Output Card	9	unit
9	Core PC with Dual 4K HDMI Output Card	4	unit
11	4K Monitor Operator 49"	16	unit
12	Monitor Commander 32"	3	unit
13	Tablet	20	unit
14	4K Webcam Camera	1	unit
15	Full-range Point-source Coloum Speaker	2	unit
16	LF Modular Line-source Bass Coloum	2	unit
17	Amplified Controller	1	unit
18	1-phase Power Sequential	1	unit
19	2-channel Wireless Microphone	1	unit
20	32-channel Mixer	1	unit
21	4-ports 78K Rhodium A/C Line Filter	1	unit
22	Speaker Cable	2	rol
23	Audio Cable	1	rol
24	305m Unikat Cable	7	rol
25	Rack Server	2	unit

Ruang Monitoring CCTV

No.	Keterangan	Vol	Satuan
1	Backlight LED Video Wall 55"	22	unit
2	Backlight LED Video Wall 55" (<i>back-up unit</i>)	4	unit
3	Front Access Bracket	22	unit
4	FHD AV KVM Over IP NPL Series	22	unit
5	4K AV KVM Over IP NPL Series	8	unit
6	4K Monitor Operator 32"	8	unit
7	Network Switch	1	unit

Ruang Auditorium

No.	Keterangan	Vol	Satuan
1	Indoor LED	1	set
	Pixel pitch: P2.5		
	Screen size: 768x336cm		
	Total resolutions: 3072x1344 pixels		
2	LED Processor	2	unit
3	FHD AV KVM Over IP NPL Series	3	unit
4	4K AV KVM Over IP NPL Series	1	unit
5	Network Switch	1	unit
6	Intelligent Recording Server	1	unit
7	Open Plugable Slot	1	unit
8	Micro Line-array Speaker Systems	6	unit
9	Micro Line-array Bass Systems 12"	2	unit
10	Flying/ Stacking Grid	2	unit
11	Amplified Controller	1	unit
12	1-phase Power Sequential	1	unit
13	2-channel Wireless Microphone	1	unit
14	32-channel Mixer	1	unit
15	4-ports 78K Rhodium A/C Line Filter	1	unit
16	Audio Cable	1	rol
17	Speaker Cable	2	rol

Supporting Requirements

No.	Keterangan	Vol	Satuan
1	Network Video Recorder	18	Set
2	Network Video Recorder AI	2	Set
3	Storage	160	Set
4	Varifocal Camera	48	Set
5	PTZ Camera	2	Set
6	Network Cable	40	Roll
7	Switch Hub PoE	14	Set
8	Accessories	1	Lot
9	Joystick	4	Set
10	Video Management System	1	Lot
11	Firewall	1	Lot
12	Gateway	1	Set
13	Core Switch	1	Unit
14	Network Access Controller	1	Unit
15	Wireless Access Point	27	unit
16	Power Adaptor	2	unit
17	Lisence	27	Lisence
18	Lisence	27	Lisence
19	Lisence	1	Lisence
20	Network Cable	15	Roll
21	Accessories	1	Lot
22	Controller Core	10	unit
23	Lisence	1	unit
24	Reader Access	27	unit
25	Box Enclosure	37	unit
26	Exit Button	27	unit
27	Lock	27	unit
28	Door Sensor	27	unit
29	Emergency Door Release	27	unit
30	Battery	27	unit
31	Door Module	27	unit

Proof of Concept Requirements

PoC System Minimum Functional Requirements

FEATURES	1.1.1 Integrated Command Control Center (ICCC)	
FUNCTIONAL REQUIREMENT	<ul style="list-style-type: none"> • Emergency and Crisis Management <ul style="list-style-type: none"> ○ ICCC administrators will receive alerts from IKN citizen’s ‘emergency button’ and respond accordingly ○ ICCC administrators will act as one stop digital public contact service for incidents and emergencies, and take necessary actions with respective relevant parties in dispatch response ○ ICCC administrators will receive public safety and natural disaster warnings from relevant parties and relay these information to IKN citizens • Safety and Surveillance <ul style="list-style-type: none"> ○ ICCC administrators can monitor roads and public places in real time ○ ICCC administrators will be connected with relevant parties for safety & security (e.g., POLRI, TNI, firefighter) as part of communication chain for emergency and crisis management 	<ul style="list-style-type: none"> • Ability to monitor of all IKN public facilities, services, and infrastructure <ul style="list-style-type: none"> ○ ICCC administrators can monitor the mobility of citizens and ensure smooth traffic/commute, integrated with Intelligent Transport System command center ○ ICCC administrators can monitor congestion or crowd levels, and share alert to citizens through IKN Smart City App, integrated with Intelligent Transport System command center ○ ICCC administrators have visibility on surrounding environmental (pollution levels, weather, humidity, temperature, etc.) and biodiversity conditions ○ ICCC administrators can monitor public utilities (e.g., water, gas, solid waster, sewerage & drainage, roads, streetlights) conditions, integrated with energy and water command centers • Analytic Purposes <ul style="list-style-type: none"> ○ ICCC administrators can use digital twin for analytics on development and potential risk that can happen to related building/roads ○ ICCC administrators have information on hospitals, disease control and prevention, integrated with help desk ○ ICCC administrators can monitor staple food supply prices and inflation to be used for food security planning <p style="text-align: right; font-size: small;">References: Synergy, Portugal</p>

Notes: Requirements above are indicative and prospective investors/consortiums may propose recommendations that’s considered more strategic on their Feasibility Study for PoC



NUSANTARA

Nusantara Capital City Authority – Jakarta Office
Menara Mandiri Tower II, Floor 27
Jl. Jend. Sudirman Kav 54-55, RT.5/RW.3, Senayan,
Kebayoran Baru, Jakarta Selatan 12190, Indonesia

Nusantara Capital City Authority – Balikpapan Office
Pantai Mentari Compound
Jl. Mulawarman 6, Manggar, Kec. Balikpapan Timur
Kota Balikpapan 76116, Kalimantan Timur

Whatsapp +62 813-1810-3174
+62-821-1010-7498

Email thd@ikn.go.id
investasi@ikn.go.id
sekretariat@ikn.go.id

Website ikn.go.id
Instagram [@thdoikn](https://www.instagram.com/thdoikn)